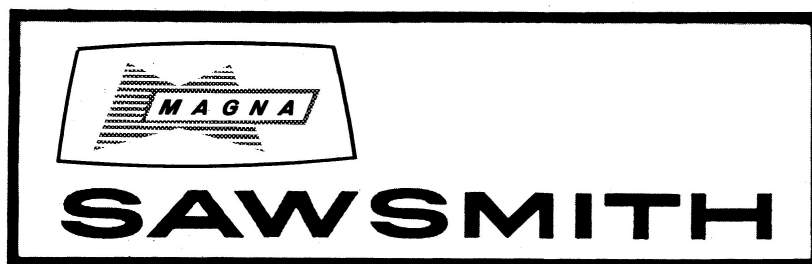
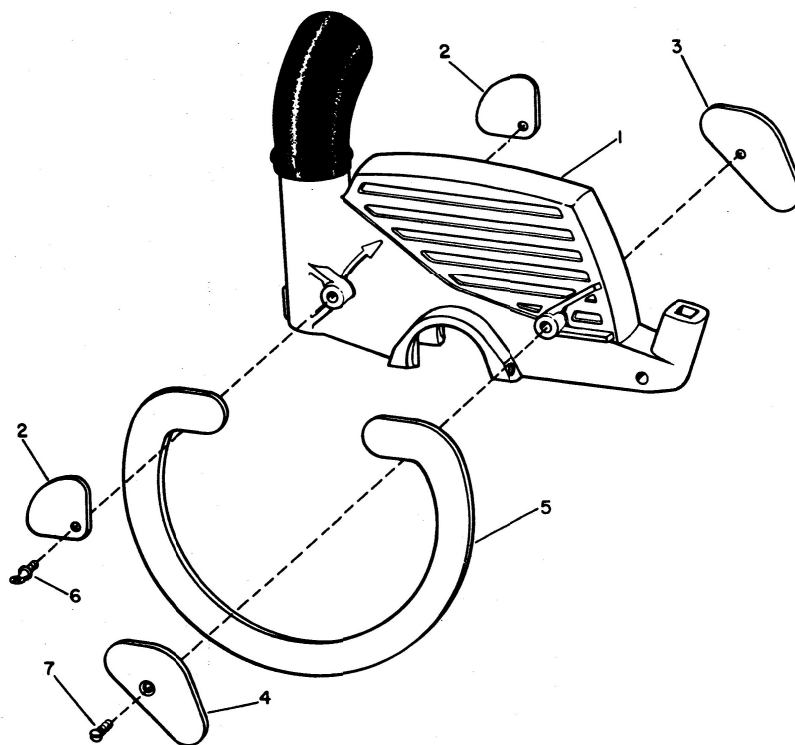


FLOATING FULL SAW GUARD



Item no. 27370

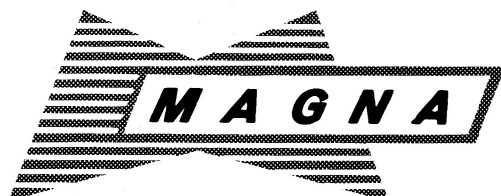
Article no. 84-2416



PARTS FOR FLOATING FULL SAW GUARD

Ref. No.	Part No.	Description	No. Req.
1	700038	Guard Ass'y.	1
2	4892	Plate	2
3	4893	Plate	1
4	4894	Plate	1
5	4895	Ring	2
6	6696	Thumb Screw, #10-24	2
7	6697	Screw-Thd Cutting, #10-24 x 1/2	2

The Plates and Floating Rings, included in this package, are to be attached to the Guard Casting by using the two Flat Head Screws and two Thumb Screws as illustrated. The Thumb Screws are provided for ease of attaching and removing the Guard. Just remove one Thumb Screw, the one next to the Cradle, drop the Floating Ring, and the Guard can be attached, or removed, without removing the Blade.



AMERICAN CORPORATION

CINCINNATI, OHIO, U. S. A.